

2019 chapter & division FACT SHEETS

Revised Copy - See Queens Vice President*

CENTRAL SUFFOLK

HAMPTONS

HUNTINGTON

NORTH FORK

SUFFOLK NORTH SHORE

SUFFOLK SOUTH SHORE

CENTRAL NASSAU

NASSAU NORTH SHORE

NASSAU SOUTH SHORE

NORTHEAST QUEENS

SOUTH QUEENS

WESTERN QUEENS

COMMERCIAL NETWORK

WOMEN'S COUNCIL

YOUNG PROFESSIONALS NETWORK

Facts You Should Know About the LONG ISLAND BOARD OF REALTORS®, INC.

- Formed in 1910 – LIBOR has been the Voice for Long Island Real Estate for over a century!
- We are the fourth largest local Realtor® Board in the country.
- LIBOR represents approximately 25,000 Realtor® members working in Queens, Nassau, Suffolk, and Brooklyn and over 290 Affiliate members that represent a range of professional and personal resources that members value.
- Every LIBOR member is assigned to a Chapter that is based geographically on the location of their office. There are a total of 12 Chapters. LIBOR also has four (4) Divisions where members can grow professionally that include: Women’s Council of Realtors®, Young Professional Network, Appraisal Division and the Long Island Commercial Network.
- LIBOR’s subsidiary, the Multiple Listing Service of Long Island, Inc. (MLSLI), is a computerized network of over 2,500 cooperating real estate offices. MLSLI operates MLSLI.com, a popular real estate website serving buyers and sellers from Manhattan to Montauk!
- LIRealtor.com is home to the Long Island Board of REALTORS®, Inc. and receives an average of 20,000 visitor sessions a day. Additionally, daily unique visitor session average around 12,000.
- LIBOR communicates with its members through a number of channels that include social media platforms such as: Facebook, Twitter, LinkedIn, Pinterest, Instagram and more.
- Every June for the past 29 years, LIBOR hosts the Annual Education Conference & Trade Expo that draws upwards of 1,000 local real estate professionals, national speakers, and exhibitors. In October, the Multiple Listing Service of Long Island, Inc., a subsidiary of LIBOR, hosts an Annual Tech Fair, a premier real estate industry related event that showcases the latest tools and technologies.
- Our members are a great source of referrals, and new business. They could bring you your next customer, or they can BE your next customer.
- Realtor® Member Profile: The typical Realtor® was described in the 2015 NAR Member profile as a 53-year-old white female who attended college and is a homeowner. The median gross income of Realtor® household was \$98,300 in 2015. Realtors® are usually independent contractors that have frequently held a career in other fields prior to real estate.



CENTRAL SUFFOLK



HAMPTONS



HUNTINGTON



NORTH FORK



SUFFOLK NORTH SHORE



SUFFOLK SOUTH SHORE



CENTRAL NASSAU



NASSAU NORTH SHORE



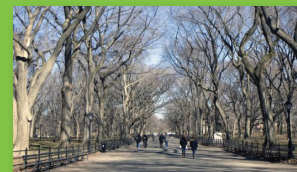
NASSAU SOUTH SHORE



NORTHEAST QUEENS



SOUTH QUEENS



WESTERN QUEENS

CENTRAL SUFFOLK

Leadership 2019

The Central Suffolk Chapter of LIBOR was organized in the Fall of 2012 to better support Realtors who serve the market with its diversity of properties. The Chapter, with its growing residential construction, still encompasses some of the largest remaining undeveloped areas on Long Island with farming, properties zoned for maintaining and raising horses as well as the recreational offerings that include the Sound and bays and inlets on the southern Shore.

members

central suffolk	1,256
hamptons	587
huntington	1,695
north fork	262
suffolk north shore	2,036
suffolk south shore	1,485

average number of

annual chapter meetings	4
breakfast 2, lunch 1, evening 1	

average meeting

attendants	65
------------------	----

average number of attendees

at annual suffolk divisional meeting event	150
---	-----



GINA MARIE BETTENHAUSER
CHAPTER PRESIDENT
Coldwell Banker Distinctive
99 Route 25A, #32 PO #268
Shoreham, NY 11786
(631) 821-2040
gina@ginabettenhauser.com



PATRICIA SHAFFER
PRESIDENT ELECT
Coldwell Banker Distinctive
99 Route 25A, #32 PO #268
Shoreham, NY 11786
(631) 821-2040
patricia.shaffer@coldwellbanker.com



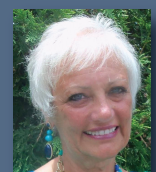
GERALDINE SAPANARO (CBR, WCR)
TREASURER
Moriches Bay Realty
234 Main Street, Suite 2
Center Moriches, NY 11934
(631) 878-0003
jts436@aol.com



KAREN STRIEGL
SECRETARY
Karen A. Striegl REALTOR
33 Sylvan Avenue
Miller Place, NY 11764
(516) 639-1715
morbay234@aol.com



KEVIN LOIACONO
SUFFOLK VICE PRESIDENT



DIANNE SCALZA
2019 LIBOR PRESIDENT

geographically speaking...

CENTRAL SUFFOLK CHAPTER

The Central Suffolk Chapter of the Long Island Board of Realtors®, Inc. covers the area of Suffolk County between Sayville to Wading River. LIBOR members working in Center Moriches, Bohemia, Bayport, Bellport, Patchogue, Middle Island, Mastic, Shirley, and many towns in between, are members of the Suffolk Central Chapter.

HAMPTONS CHAPTER

The Hamptons Chapter of the Long Island Board of Realtors®, Inc. (LIBOR) covers the area of eastern Suffolk County between Hampton Bays and Montauk. LIBOR members working in Quogue, Westhampton Beach, Bridgehampton, Southampton, East Hampton, Eastport, Sag Harbor, and towns in between, are members of the Hamptons Chapter.

SUFFOLK NORTH SHORE CHAPTER

The Suffolk North Shore Chapter of the Long Island Board of Realtors®, Inc. (LIBOR) covers the area of Suffolk County between Hauppauge to Stony Brook. LIBOR members working in Centereach, Coram, Setauket, Farmingville, Lake Ronkonkoma, Port Jefferson, Smithtown, Selden, and several towns in between, are members of the Suffolk North Shore Chapter.

SUFFOLK SOUTH SHORE CHAPTER

The Suffolk South Shore Chapter of the Long Island Board of Realtors®, Inc. (LIBOR) covers the area of Suffolk County between Amityville and Islip. LIBOR members working in Babylon, Brentwood, Bay Shore, Farmingdale, Islandia, Lindenhurst, Wyandanch, Copiague, and several towns in between, are members of the Suffolk South Shore Chapter.

HUNTINGTON CHAPTER

The Huntington Chapter of the Long Island Board of Realtors®, Inc. (LIBOR) covers the area of Suffolk County between Cold Spring Harbor and Northport. LIBOR members working in Centerport, Dix Hills, Huntington, Huntington Station, Melville, Commack, East Northport, and towns in between, are members of the Huntington Chapter.

NORTH FORK CHAPTER

The North Fork Chapter of the Long Island Board of Realtors®, Inc. (LIBOR) covers the area of eastern Suffolk County between Riverhead and Orient. LIBOR members working in Aquebogue, Cutchogue, Greenport, Southold, Jamesport and towns in between, are members of the North Fork Chapter.

REAL ESTATE MARKET DATA

2018 Long Island Median Home Price*	\$455,000
Nassau County Closed Median Home Price	\$520,000
Suffolk County Closed Median Home Price	\$375,000
Queens County Closed Median Home Price	\$570,000
LI Contracted (Pending) Median Home Price	\$460,000
LI 2018 Closed Sales Activity	38,799
LI 2018 Contracted Sales Activity	40,319

*Long Island includes data from Nassau, Suffolk and Queens counties.

ABOUT LIBOR

Since 1910 the Long Island Board of Realtors® Inc., (LIBOR) has been the voice of Long Island Real Estate. We represent over 25,000 Realtor members and over 290 Affiliated business members.

For more information on how to get involved contact Mike Miller, Business Development Manager, 631-661-4800 x384 or mmiller@lirealtor.com.

CENTRALSUFFOLK.LIREALTOR.COM

HAMPTONS

Leadership 2019

The Hamptons Chapter of LIBOR was formally reorganized in the Fall of 2012 to better serve the many REALTOR® members in this unique market. The Chapter encompasses some of Long Island’s most appealing geography with world renown ocean beaches, farmland, boating and recreational opportunities. It’s members service a residential market ranging from luxurious properties for sale and rental as well as primary and vacation homes and includes land sales for farming and wine production.

members

central suffolk	1,256
hamptons	587
huntington	1,695
north fork	262
suffolk north shore	2,036
suffolk south shore	1,485

average number of
annual chapter meetings 10
breakfast 4, lunch 1, evening 3, beach 1

average meeting attendants 35

average number of attendees at annual
suffolk divisional meeting event 150



ANNA GREENWALD
CHAPTER PRESIDENT
South Fork Realty
143 W. Montauk Highway
Hampton Bays, NY 11946
(631) 728-6565
agreenwald@southforkrealty.com



VINCENT FREZZO
PRESIDENT ELECT
Douglas Elliman Real Estate
2488 Main Street
Bridgehampton, NY 11932
(631) 537-5900
Vincent.Frezza@elliman.com



MARY BINDER
VICE PRESIDENT
Douglas Elliman Real Estate
14 W. Montauk Highway
Hampton Bays, NY 11946
(631) 723-2721 • mary.Binder@alliman.com



JANICE HAYDEN
VP OF SPONSORSHIP
Halstead Hamptons LLC
31 Main Street
Southampton, NY 11968
(631) 771-5333 • jhayden@halstead.com



PATRICIA BRADY
TREASURER
Nest Seekers International LLC
P.O. Box 742
Bridgehampton, NY 11932
(631) 353-3048 • patyb@nestseekers.com



JOSEPH J PICCININNI JR
SECRETARY



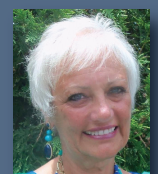
KALEN RAYNOR
VP PUBLIC RELATIONS



KYLE KELLY
EAST END LIAISON



KEVIN LOIACONO
SUFFOLK VICE PRESIDENT



DIANNE SCALZA
2019 LIBOR PRESIDENT

geographically speaking...

HAMPTONS CHAPTER

The Hamptons Chapter of the Long Island Board of Realtors®, Inc. (LIBOR) covers the area of eastern Suffolk County between Hampton Bays and Montauk. LIBOR members working in Quogue, Westhampton Beach, Bridgehampton, Southampton, East Hampton, Eastport, Sag Harbor, and towns in between, are members of the Hamptons Chapter.

SUFFOLK NORTH SHORE CHAPTER

The Suffolk North Shore Chapter of the Long Island Board of Realtors®, Inc. (LIBOR) covers the area of Suffolk County between Hauppauge to Stony Brook. LIBOR members working in Centereach, Coram, Setauket, Farmingville, Lake Ronkonkoma, Port Jefferson, Smithtown, Selden, and several towns in between, are members of the Suffolk North Shore Chapter.

CENTRAL SUFFOLK CHAPTER

The Central Suffolk Chapter of the Long Island Board of Realtors®, Inc. covers the area of Suffolk County between Sayville to Wading River. LIBOR members working in Center Moriches, Bohemia, Bayport, Bellport, Patchogue, Middle Island, Mastic, Shirley, and many towns in between, are members of the Suffolk Central Chapter.

SUFFOLK SOUTH SHORE CHAPTER

The Suffolk South Shore Chapter of the Long Island Board of Realtors®, Inc. (LIBOR) covers the area of Suffolk County between Amityville and Islip. LIBOR members working in Babylon, Brentwood, Bay Shore, Farmingdale, Islandia, Lindenhurst, Wyandanch, Copiague, and several towns in between, are members of the Suffolk South Shore Chapter.

HUNTINGTON CHAPTER

The Huntington Chapter of the Long Island Board of Realtors®, Inc. (LIBOR) covers the area of Suffolk County between Cold Spring Harbor and Northport. LIBOR members working in Centerport, Dix Hills, Huntington, Huntington Station, Melville, Commack, East Northport, and towns in between, are members of the Huntington Chapter.

NORTH FORK CHAPTER

The North Fork Chapter of the Long Island Board of Realtors®, Inc. (LIBOR) covers the area of eastern Suffolk County between Riverhead and Orient. LIBOR members working in Aquebogue, Cutchogue, Greenport, Southold, Jamesport and towns in between, are members of the North Fork Chapter.

REAL ESTATE MARKET DATA

2018 Long Island Median Home Price*	\$455,000
Nassau County Closed Median Home Price	\$520,000
Suffolk County Closed Median Home Price	\$375,000
Queens County Closed Median Home Price	\$570,000
LI Contracted (Pending) Median Home Price	\$460,000
LI 2018 Closed Sales Activity	38,799
LI 2018 Contracted Sales Activity	40,319

*Long Island includes data from Nassau, Suffolk and Queens counties.

ABOUT LIBOR

Since 1910 the Long Island Board of Realtors® Inc., (LIBOR) has been the voice of Long Island Real Estate. We represent over 25,000 Realtor members and over 290 Affiliated business members.

For more information on how to get involved contact Mike Miller, Business Development Manager, 631-661-4800 x384 or mmiller@lirealtor.com.

HAMPTONS.LIREALTOR.COM

HUNTINGTON TOWNSHIP

Leadership 2019

The Huntington Township Chapter of the Long Island Board of REALTORS® (LIBOR) was formed in 1957. Our objective: to unite individuals involved in the real estate industry in Huntington and to work as an arm of the Board for the betterment of their communities, their profession, and their livelihood.

members

central suffolk	1,256
hamptons	587
huntington	1,695
north fork	262
suffolk north shore	2,036
suffolk south shore	1,485

average number of

annual chapter meetings	6
breakfast 4, evening 2	

average meeting

attendants	100
------------------	-----

average number of attendees

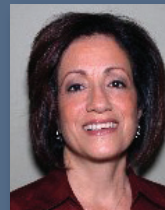
at annual suffolk divisional meeting event	150
---	-----



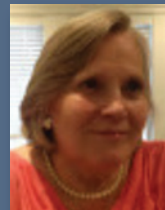
FRANK SPARACINO (ABR)
CHAPTER PRESIDENT
Esquire Realty Strategies
131 Scudder Avenue
Northport, NY 11768
(631) 606-2877 • info@esqre.com



ANTHONY MUSSO
PRESIDENT ELECT
Prime Properties Long Island
453 New York Avenue
Huntington, NY 11743
(631) 427-9600
amusso@primepropertiesli.com



DEBRA CHIAPPETTA
VP OF SPONSORSHIP
Stonington Realty LLC
68 S. Service Road, Suite 100
Melville, NY 11747
(631) 224-4800 • dac.besthomes@gmail.com



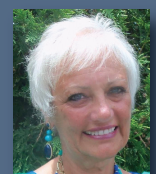
ELKE MARIOTTI (SFR, CBR, SRES)
TREASURER
Signature Premier Properties
157 E. Main Street
Huntington, NY 11743
(631) 673-3700 • your.realtor.elke@gmail.com



CHRISTINA TABACCO WEBER
SECRETARY
Lucky to Live Here Realty
129 Main Street
Cold Spring Harbor, NY 11724
(631) 692-7100
christina@luckytolivehere.com



KEVIN LOIACONO
SUFFOLK VICE PRESIDENT



DIANNE SCALZA
2019 LIBOR PRESIDENT

geographically speaking...

HUNTINGTON CHAPTER

The Huntington Chapter of the Long Island Board of Realtors®, Inc. (LIBOR) covers the area of Suffolk County between Cold Spring Harbor and Northport. LIBOR members working in Centerport, Dix Hills, Huntington, Huntington Station, Melville, Commack, East Northport, and towns in between, are members of the Huntington Chapter.

HAMPTONS CHAPTER

The Hamptons Chapter of the Long Island Board of Realtors®, Inc. (LIBOR) covers the area of eastern Suffolk County between Hampton Bays and Montauk. LIBOR members working in Quogue, Westhampton Beach, Bridgehampton, Southampton, East Hampton, Eastport, Sag Harbor, and towns in between, are members of the Hamptons Chapter.

SUFFOLK NORTH SHORE CHAPTER

The Suffolk North Shore Chapter of the Long Island Board of Realtors®, Inc. (LIBOR) covers the area of Suffolk County between Hauppauge to Stony Brook. LIBOR members working in Centereach, Coram, Setauket, Farmingville, Lake Ronkonkoma, Port Jefferson, Smithtown, Selden, and several towns in between, are members of the Suffolk North Shore Chapter.

CENTRAL SUFFOLK CHAPTER

The Central Suffolk Chapter of the Long Island Board of Realtors®, Inc. covers the area of Suffolk County between Sayville to Wading River. LIBOR members working in Center Moriches, Bohemia, Bayport, Bellport, Patchogue, Middle Island, Mastic, Shirley, and many towns in between, are members of the Suffolk Central Chapter.

SUFFOLK SOUTH SHORE CHAPTER

The Suffolk South Shore Chapter of the Long Island Board of Realtors®, Inc. (LIBOR) covers the area of Suffolk County between Amityville and Islip. LIBOR members working in Babylon, Brentwood, Bay Shore, Farmingdale, Islandia, Lindenhurst, Wyandanch, Copiague, and several towns in between, are members of the Suffolk South Shore Chapter.

NORTH FORK CHAPTER

The North Fork Chapter of the Long Island Board of Realtors®, Inc. (LIBOR) covers the area of eastern Suffolk County between Riverhead and Orient. LIBOR members working in Aquebogue, Cutchogue, Greenport, Southold, Jamesport and towns in between, are members of the North Fork Chapter.

REAL ESTATE MARKET DATA

2018 Long Island Median Home Price*	\$455,000
Nassau County Closed Median Home Price	\$520,000
Suffolk County Closed Median Home Price	\$375,000
Queens County Closed Median Home Price	\$570,000
LI Contracted (Pending) Median Home Price	\$460,000
LI 2018 Closed Sales Activity	38,799
LI 2018 Contracted Sales Activity	40,319

*Long Island includes data from Nassau, Suffolk and Queens counties.

ABOUT LIBOR

Since 1910 the Long Island Board of Realtors® Inc., (LIBOR) has been the voice of Long Island Real Estate. We represent over 25,000 Realtor members and over 290 Affiliated business members.

For more information on how to get involved contact Mike Miller, Business Development Manager, 631-661-4800 x384 or mmiller@lirealtor.com.

HUNTINGTONTOWNSHIP.LIREALTOR.COM

chapter

CENTRAL SUFFOLK • HAMPTONS • HUNTINGTON • NORTH FORK •
SUFFOLK NORTH SHORE • SUFFOLK SOUTH SHORE



NORTH FORK

Leadership 2019

The North Fork Chapter of LIBOR was organized in the Fall of 2012 to better serve REALTORS® in this unique area. The Chapter encompasses some of Long Island's most unspoiled geography with its wineries, farmland, boating and recreational offerings. Its members service a market of primary and vacation homes as well as land sales for various development opportunities.

members

central suffolk	1,256
hamptons	587
huntington	1,695
north fork	262
suffolk north shore	2,036
suffolk south shore	1,485

average number of

annual chapter meetings 4

average meeting attendants 70

average number of attendees at annual

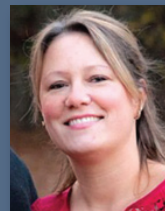
suffolk divisional meeting event 150



MELISSA BRANDT
CHAPTER PRESIDENT
Douglas Elliman Real Estate
10200 Main Rd
Mattituck, NY 11952
(631) 298-8000
melissa.brandt@elliman.com



KYLE M. KELLY
EAST END LIAISON
Realty Connect USA L.I. Inc.
580 Route 112 # 7-8
Patchogue, NY 11772
(877) 647-1092
kkellyny@gmail.com



SHANNON HANSEN
TREASURER
Pristine Properties Cole & Associates
516 Route 25A
Mount Sinai, NY 11766
(631) 689-5001
bradys100@yahoo.com



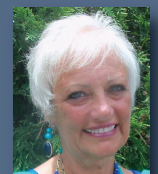
MELISSA MCGRATH
SECRETARY
Daniel Gale Sothebys International
70 Love Ln
Mattituck, NY 11952
(631) 298-4130
melissamcgrath@danielgale.com



KYLE KELLY
EAST END LIAISON



KEVIN LOIACONO
SUFFOLK VICE PRESIDENT



DIANNE SCALZA
2019 LIBOR PRESIDENT

geographically speaking...

NORTH FORK CHAPTER

The North Fork Chapter of the Long Island Board of Realtors[®], Inc. (LIBOR) covers the area of eastern Suffolk County between Riverhead and Orient. LIBOR members working in Aquebogue, Cutchogue, Greenport, Southold, Jamesport and towns in between, are members of the North Fork Chapter.

HUNTINGTON CHAPTER

The Huntington Chapter of the Long Island Board of Realtors[®], Inc. (LIBOR) covers the area of Suffolk County between Cold Spring Harbor and Northport. LIBOR members working in Centerport, Dix Hills, Huntington, Huntington Station, Melville, Commack, East Northport, and towns in between, are members of the Huntington Chapter.

HAMPTONS CHAPTER

The Hamptons Chapter of the Long Island Board of Realtors[®], Inc. (LIBOR) covers the area of eastern Suffolk County between Hampton Bays and Montauk. LIBOR members working in Quogue, Westhampton Beach, Bridgehampton, Southampton, East Hampton, Eastport, Sag Harbor, and towns in between, are members of the Hamptons Chapter.

SUFFOLK NORTH SHORE CHAPTER

The Suffolk North Shore Chapter of the Long Island Board of Realtors[®], Inc. (LIBOR) covers the area of Suffolk County between Hauppauge to Stony Brook. LIBOR members working in Centereach, Coram, Setauket, Farmingville, Lake Ronkonkoma, Port Jefferson, Smithtown, Selden, and several towns in between, are members of the Suffolk North Shore Chapter.

CENTRAL SUFFOLK CHAPTER

The Central Suffolk Chapter of the Long Island Board of Realtors[®], Inc. covers the area of Suffolk County between Sayville to Wading River. LIBOR members working in Center Moriches, Bohemia, Bayport, Bellport, Patchogue, Middle Island, Mastic, Shirley, and many towns in between, are members of the Suffolk Central Chapter.

SUFFOLK SOUTH SHORE CHAPTER

The Suffolk South Shore Chapter of the Long Island Board of Realtors[®], Inc. (LIBOR) covers the area of Suffolk County between Amityville and Islip. LIBOR members working in Babylon, Brentwood, Bay Shore, Farmingdale, Islandia, Lindenhurst, Wyandanch, Copiague, and several towns in between, are members of the Suffolk South Shore Chapter.

REAL ESTATE MARKET DATA

2018 Long Island Median Home Price*	\$455,000
Nassau County Closed Median Home Price	\$520,000
Suffolk County Closed Median Home Price	\$375,000
Queens County Closed Median Home Price	\$570,000
LI Contracted (Pending) Median Home Price	\$460,000
LI 2018 Closed Sales Activity	38,799
LI 2018 Contracted Sales Activity	40,319

*Long Island includes data from Nassau, Suffolk and Queens counties.

ABOUT LIBOR

Since 1910 the Long Island Board of Realtors[®] Inc., (LIBOR) has been the voice of Long Island Real Estate. We represent over 25,000 Realtor members and over 290 Affiliated business members.

For more information on how to get involved contact Mike Miller, Business Development Manager, 631-661-4800 x384 or mmiller@lirealtor.com.

NORTHFORK.LIREALTOR.COM

chapter

CENTRAL SUFFOLK • HAMPTONS • HUNTINGTON • NORTH FORK •
SUFFOLK NORTH SHORE • SUFFOLK SOUTH SHORE



SUFFOLK NORTH SHORE

Leadership 2019

The Suffolk North Shore Chapter was organized in 1955, and now has an active and growing membership. Our objective: to further productive cooperation among member REALTORS®, to increase professional proficiency through educational and informational meetings, and to greater benefit the community through contributions of both knowledge and service.

members

central suffolk	1,256
hamptons	587
huntington	1,695
north fork	262
suffolk north shore	2,036
suffolk south shore	1,485

average number of

annual chapter meetings 4

average meeting

attendants 15

average number of attendees

at annual suffolk divisional
meeting event 150



ROSE TORRACA (SRES)
CHAPTER PRESIDENT
Coldwell Banker Residential
2395 Ocean Avenue, Suite 1
Ronkonkoma, NY 11779
(631) 588-9090 • rose.torraca@cbmoves.com



GINA AMEN (WCR, SRES)
PRESIDENT ELECT
American Real Estate Associates Inc.
530 Route 25A
Saint James, NY 11780
(631) 862-6605
americanrealest@optonline.net



TAMIR MORI
VICE PRESIDENT
Cornerstone Real Estate Services LLC
444 Route 111
Smithtown, NY 11787
(631) 257-0027 • tamirishere@gmail.com



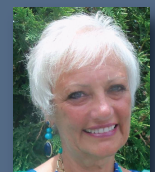
MARY VAN TUYL
TREASURER
Daniel Gale Agency Inc.
1067 Route 25A
Stony Brook, NY 11790
(631) 689-6980 • maryvantuyl@danielgale.com



JULIE CHAN (WCR, CIPS)
SECRETARY
Coldwell Banker Residential
2395 Ocean Avenue, Suite 1
Ronkonkoma, NY 11779
(631) 588-9090 • julie.chan@cbmoves.com



KEVIN LOIACONO
SUFFOLK VICE PRESIDENT



DIANNE SCALZA
2019 LIBOR PRESIDENT

geographically speaking...

SUFFOLK NORTH SHORE CHAPTER

The Suffolk North Shore Chapter of the Long Island Board of Realtors®, Inc. (LIBOR) covers the area of Suffolk County between Hauppauge to Stony Brook. LIBOR members working in Centereach, Coram, Setauket, Farmingville, Lake Ronkonkoma, Port Jefferson, Smithtown, Selden, and several towns in between, are members of the Suffolk North Shore Chapter.

HAMPTONS CHAPTER

The Hamptons Chapter of the Long Island Board of Realtors®, Inc. (LIBOR) covers the area of eastern Suffolk County between Hampton Bays and Montauk. LIBOR members working in Quogue, Westhampton Beach, Bridgehampton, Southampton, East Hampton, Eastport, Sag Harbor, and towns in between, are members of the Hamptons Chapter.

CENTRAL SUFFOLK CHAPTER

The Central Suffolk Chapter of the Long Island Board of Realtors®, Inc. covers the area of Suffolk County between Sayville to Wading River. LIBOR members working in Center Moriches, Bohemia, Bayport, Bellport, Patchogue, Middle Island, Mastic, Shirley, and many towns in between, are members of the Suffolk Central Chapter.

SUFFOLK SOUTH SHORE CHAPTER

The Suffolk South Shore Chapter of the Long Island Board of Realtors®, Inc. (LIBOR) covers the area of Suffolk County between Amityville and Islip. LIBOR members working in Babylon, Brentwood, Bay Shore, Farmingdale, Islandia, Lindenhurst, Wyandanch, Copiague, and several towns in between, are members of the Suffolk South Shore Chapter.

HUNTINGTON CHAPTER

The Huntington Chapter of the Long Island Board of Realtors®, Inc. (LIBOR) covers the area of Suffolk County between Cold Spring Harbor and Northport. LIBOR members working in Centerport, Dix Hills, Huntington, Huntington Station, Melville, Commack, East Northport, and towns in between, are members of the Huntington Chapter.

NORTH FORK CHAPTER

The North Fork Chapter of the Long Island Board of Realtors®, Inc. (LIBOR) covers the area of eastern Suffolk County between Riverhead and Orient. LIBOR members working in Aquebogue, Cutchogue, Greenport, Southold, Jamesport and towns in between, are members of the North Fork Chapter.

REAL ESTATE MARKET DATA

2018 Long Island Median Home Price*	\$455,000
Nassau County Closed Median Home Price	\$520,000
Suffolk County Closed Median Home Price	\$375,000
Queens County Closed Median Home Price	\$570,000
LI Contracted (Pending) Median Home Price	\$460,000
LI 2018 Closed Sales Activity	38,799
LI 2018 Contracted Sales Activity	40,319

*Long Island includes data from Nassau, Suffolk and Queens counties.

ABOUT LIBOR

Since 1910 the Long Island Board of Realtors® Inc., (LIBOR) has been the voice of Long Island Real Estate. We represent over 25,000 Realtor members and over 290 Affiliated business members.

For more information on how to get involved contact Mike Miller, Business Development Manager, 631-661-4800 x384 or mmiller@lirealtor.com.

SUFFOLKNORTHSHORE.LIREALTOR.COM

chapter

CENTRAL SUFFOLK • HAMPTONS • HUNTINGTON • NORTH FORK •
SUFFOLK NORTH SHORE • SUFFOLK SOUTH SHORE



SUFFOLK SOUTH SHORE

Leadership 2019

Members of the Suffolk South Shore Chapter of the Long Island Board of REALTORS® deal primarily in resales of residential property, followed by commercial sales and appraisals. Our objective: “to establish a good working rapport among the member brokers; to increase the proficiency of real estate skills among members; and to develop increased services for the public.”

members

central suffolk	1,256
hamptons	587
huntington	1,695
north fork	262
suffolk north shore	2,036
suffolk south shore	1,485

average number of

annual chapter meetings 6

average meeting

attendants 85

average number of attendees

at annual suffolk divisional
meeting event 150



EDMOND RYAN
CHAPTER PRESIDENT
Ed Ryan Real Estate Group
239 Higbie Lane
West Islip, NY 11795
(631) 647-4100
eryan@edryanrealestategroup.com



PAUL WERNERSBACH
PRESIDENT ELECT
Sunset 3 Realty
175 Orinoco Drive, Suite 101
Brightwaters, NY 11718
(631) 666-2110 • sunset_three@yahoo.com



BARBARA SCHAFFER
VICE PRESIDENT
Exit Realty All Pro
269 West Main Street
Bay Shore, NY 11706
(631) 647-8844
barbarasellslongisland@gmail.com



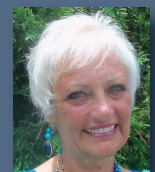
JOELLE SIEMERS
TREASURER
Ed Ryan Real Estate Group
239 Higbie Lane
West Islip, NY 11795
(631) 647-4100 • joellesiemers1@gmail.com



PAIGE RYAN
SECRETARY
Ed Ryan Real Estate Group
239 Higbie Lane
West Islip, NY 11795
(631) 647-4100 • paigeryan631@gmail.com



KEVIN LOIACONO
SUFFOLK VICE PRESIDENT



DIANNE SCALZA
2019 LIBOR PRESIDENT

geographically speaking...

SUFFOLK SOUTH SHORE CHAPTER

The Suffolk South Shore Chapter of the Long Island Board of Realtors®, Inc. (LIBOR) covers the area of Suffolk County between Amityville and Islip. LIBOR members working in Babylon, Brentwood, Bay Shore, Farmingdale, Islandia, Lindenhurst, Wyandanch, Copiague, and several towns in between, are members of the Suffolk South Shore Chapter.

HUNTINGTON CHAPTER

The Huntington Chapter of the Long Island Board of Realtors®, Inc. (LIBOR) covers the area of Suffolk County between Cold Spring Harbor and Northport. LIBOR members working in Centerport, Dix Hills, Huntington, Huntington Station, Melville, Commack, East Northport, and towns in between, are members of the Huntington Chapter.

HAMPTONS CHAPTER

The Hamptons Chapter of the Long Island Board of Realtors®, Inc. (LIBOR) covers the area of eastern Suffolk County between Hampton Bays and Montauk. LIBOR members working in Quogue, Westhampton Beach, Bridgehampton, Southampton, East Hampton, Eastport, Sag Harbor, and towns in between, are members of the Hamptons Chapter.

SUFFOLK NORTH SHORE CHAPTER

The Suffolk North Shore Chapter of the Long Island Board of Realtors®, Inc. (LIBOR) covers the area of Suffolk County between Hauppauge to Stony Brook. LIBOR members working in Centereach, Coram, Setauket, Farmingville, Lake Ronkonkoma, Port Jefferson, Smithtown, Selden, and several towns in between, are members of the Suffolk North Shore Chapter.

CENTRAL SUFFOLK CHAPTER

The Central Suffolk Chapter of the Long Island Board of Realtors®, Inc. covers the area of Suffolk County between Sayville to Wading River. LIBOR members working in Center Moriches, Bohemia, Bayport, Bellport, Patchogue, Middle Island, Mastic, Shirley, and many towns in between, are members of the Suffolk Central Chapter.

NORTH FORK CHAPTER

The North Fork Chapter of the Long Island Board of Realtors®, Inc. (LIBOR) covers the area of eastern Suffolk County between Riverhead and Orient. LIBOR members working in Aquebogue, Cutchogue, Greenport, Southold, Jamesport and towns in between, are members of the North Fork Chapter.

REAL ESTATE MARKET DATA

2018 Long Island Median Home Price*	\$455,000
Nassau County Closed Median Home Price	\$520,000
Suffolk County Closed Median Home Price	\$375,000
Queens County Closed Median Home Price	\$570,000
LI Contracted (Pending) Median Home Price	\$460,000
LI 2018 Closed Sales Activity	38,799
LI 2018 Contracted Sales Activity	40,319

*Long Island includes data from Nassau, Suffolk and Queens counties.

ABOUT LIBOR

Since 1910 the Long Island Board of Realtors® Inc., (LIBOR) has been the voice of Long Island Real Estate. We represent over 25,000 Realtor members and over 290 Affiliated business members.

For more information on how to get involved contact Mike Miller, Business Development Manager, 631-661-4800 x384 or mmiller@lirealtor.com.

SUFFOLKSOUTHSHORE.LIREALTOR.COM

CENTRAL NASSAU

Leadership 2019

The Central Nassau Chapter of the Long Island Board of REALTORS® (LIBOR) was founded in 1959. Most members deal primarily in single-family residential units. Its purpose is to accelerate our members to a professional status and to keep members informed of the most efficient methods under which to conduct their business. Members have participated in Kiwanis, Lions, Optimist, and Exchange club activities. Our mission is to bring members, sponsors and community members together to promote common interests.

members

central nassau 3,705
nassau north shore 3,316
nassau south shore 2,821

average number of

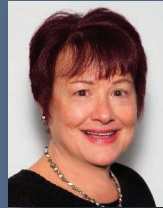
annual chapter meetings 6

average meeting

attendants 60

average number of attendees

at annual nassau divisional
meeting event 100



RUTH PFEFFER
CHAPTER PRESIDENT
Charles Rutenberg Realty Inc.
255 Executive Drive, Suite 208
Plainview, NY 11803
(516) 575-7500
rpfeffer@crrli.net



JEANNINE PRINCIPE PULEO
PRESIDENT ELECT
Douglas Elliman Real Estate
390 Franklin Avenue
Franklin Square, NY 11010
(516) 354-6500
jprincipe@elliman.com



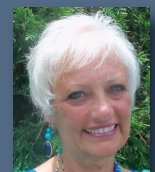
BARBARA GUNN
TREASURER
Douglas Elliman Real Estate
390 Franklin Avenue
Franklin Square, NY 11010
(516) 354-6500
barbara.gunn@elliman.com



JOHN SUCCOSO
SECRETARY
Douglas Elliman Real Estate
998 Old Country Road, Suite A
Plainview, NY 11803
(516) 681-2600
John.Succoso@elliman.com



JOE SINNONA
NASSAU VICE PRESIDENT



DIANNE SCALZA
2019 LIBOR PRESIDENT

geographically speaking...

CENTRAL NASSAU CHAPTER

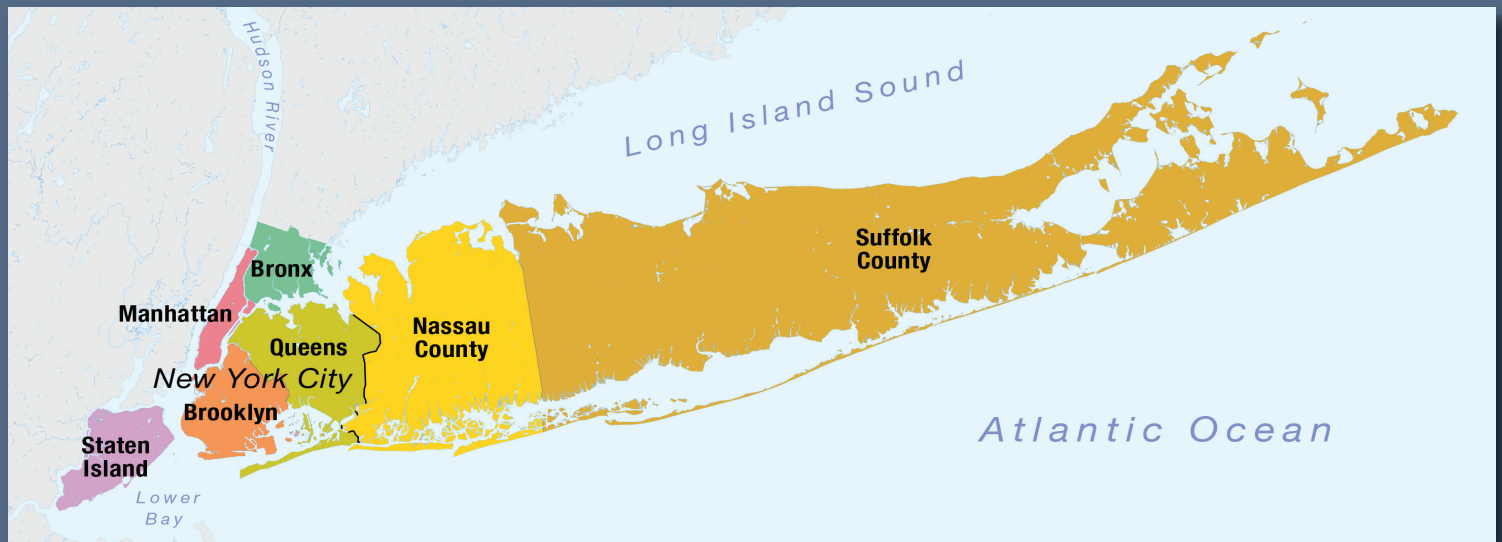
The Central Nassau Chapter of the Long Island Board of Realtors®, Inc. (LIBOR) covers the area of Nassau County that covers the area of Floral Park to Plainview. LIBOR members working in Albertson, Bethpage, Garden City, East Meadow, Mineola, Hempstead, Hicksville, Uniondale, Westbury, West Hempstead, and other towns in between, are members of the Central Nassau Chapter.

NASSAU NORTH SHORE CHAPTER

The Nassau North Shore Chapter of the Long Island Board of Realtors®, Inc. (LIBOR) covers the area of Nassau County between Great Neck and Woodbury. LIBOR members working in Bayville, Glen Cove, Manhasset, New Hyde Park, Sea Cliff, Port Washington, Jericho, Syosset, and several towns in between, are members of the Nassau North Shore Chapter.

NASSAU SOUTH SHORE CHAPTER

The Nassau South Shore Chapter of the Long Island Board of Realtors®, Inc. (LIBOR) covers the area of Nassau County between East Rockaway and Massapequa. LIBOR members working in Long Beach, Bellmore, Freeport, Hewlett, Lawrence, Lynbrook, Merrick, Roosevelt, Rockville Centre, Wantagh, Valley Stream, and towns in between, are members of the Nassau South Shore Chapter.



REAL ESTATE MARKET DATA

2018 Long Island Median Home Price*	\$455,000
Nassau County Closed Median Home Price	\$520,000
Suffolk County Closed Median Home Price	\$375,000
Queens County Closed Median Home Price	\$570,000
LI Contracted (Pending) Median Home Price	\$460,000
LI 2018 Closed Sales Activity	38,799
LI 2018 Contracted Sales Activity	40,319

*Long Island includes data from Nassau, Suffolk and Queens counties.

ABOUT LIBOR

Since 1910 the Long Island Board of Realtors® Inc., (LIBOR) has been the voice of Long Island Real Estate. We represent over 25,000 Realtor members and over 290 Affiliated business members.

For more information on how to get involved contact Mike Miller, Business Development Manager, 631-661-4800 x384 or mmiller@lirealtor.com.

CENTRALNASSAU.LIREALTOR.COM

NASSAU NORTH SHORE

Leadership 2019

Nassau North Shore – Founded in 1960; members deal primarily in residential property (single and multiple family dwellings), with business and commercial property secondary. Described objective: “to provide a place for the discussion of ideas of mutual interest and to publicize the concept of the qualified REALTOR® and to elevate his position; to cooperate with local government and community agencies for the benefit of the entire community.” Members have participated in the Lions, Kiwanis, Rotary, Chamber of Commerce, Better Business Bureau, Long Island Association, Boy and Girl Scouts, Red Cross, Cancer, Heart and TB Associations, and performed services at various hospitals.

members

central nassau	3,705
nassau north shore	3,316
nassau south shore	2,821

average number of
annual chapter meetings 4

average meeting
attendants 90

average number of attendees
at annual nassau divisional
meeting event 100



MELODY RICHMAN
CHAPTER PRESIDENT
Laffey Real Estate
55 Northern Boulevard, Suite 212
Greenvale, NY 11548
(516) 625-6666
mrichman@laffeyRE.com



SUSAN SCHUMAN (CBR)
PRESIDENT ELECT
Realty Connect USA LLC
175 Crossways Park Drive West,
Woodbury, NY 11797
(888) 236-6319
sueschuman@realtyconnectusa.com



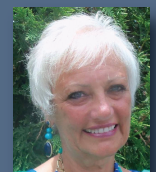
LESLIE KLE
TREASURER
Coldwell Banker Residential
140 Jericho Turnpike
Syosset, NY 11791
(516) 864-8100
leslie.kle@cbmoves.com



MONA KREMIN
SECRETARY
Keller Williams Realty Greater
400 Garden City Plaza, Suite 438
Garden City, NY 11530
(516) 873-7100
monakremin@kw.com



JOE SINNONA
NASSAU VICE PRESIDENT



DIANNE SCALZA
2019 LIBOR PRESIDENT

geographically speaking...

NASSAU NORTH SHORE CHAPTER

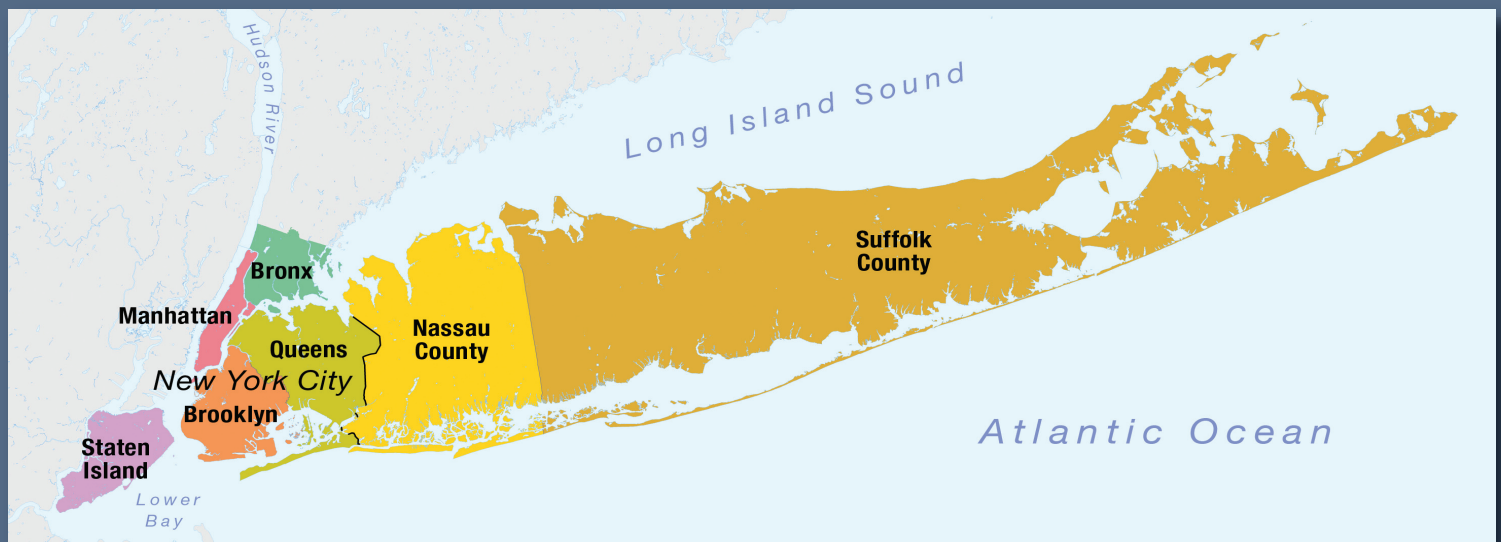
The Nassau North Shore Chapter of the Long Island Board of Realtors[®], Inc. (LIBOR) covers the area of Nassau County between Great Neck and Woodbury. LIBOR members working in Bayville, Glen Cove, Manhasset, New Hyde Park, Sea Cliff, Port Washington, Jericho, Syosset, and several towns in between, are members of the Nassau North Shore Chapter.

NASSAU SOUTH SHORE CHAPTER

The Nassau South Shore Chapter of the Long Island Board of Realtors[®], Inc. (LIBOR) covers the area of Nassau County between East Rockaway and Massapequa. LIBOR members working in Long Beach, Bellmore, Freeport, Hewlett, Lawrence, Lynbrook, Merrick, Roosevelt, Rockville Centre, Wantagh, Valley Stream, and towns in between, are members of the Nassau South Shore Chapter.

CENTRAL NASSAU CHAPTER

The Central Nassau Chapter of the Long Island Board of Realtors[®], Inc. (LIBOR) covers the area of Nassau County that covers the area of Floral Park to Plainview. LIBOR members working in Albertson, Bethpage, Garden City, East Meadow, Mineola, Hempstead, Hicksville, Uniondale, Westbury, West Hempstead, and other towns in between, are members of the Central Nassau Chapter.



REAL ESTATE MARKET DATA

2018 Long Island Median Home Price*	\$455,000
Nassau County Closed Median Home Price	\$520,000
Suffolk County Closed Median Home Price	\$375,000
Queens County Closed Median Home Price	\$570,000
LI Contracted (Pending) Median Home Price	\$460,000
LI 2018 Closed Sales Activity	38,799
LI 2018 Contracted Sales Activity	40,319

*Long Island includes data from Nassau, Suffolk and Queens counties.

ABOUT LIBOR

Since 1910 the Long Island Board of Realtors[®] Inc., (LIBOR) has been the voice of Long Island Real Estate. We represent over 25,000 Realtor members and over 290 Affiliated business members.

For more information on how to get involved contact Mike Miller, Business Development Manager, 631-661-4800 x384 or mmiller@lirealtor.com.

NASSAUNORTHSHORE.LIREALTOR.COM

Note that this Fact Sheet is to be used for marketing purposes only. Some of the data reflected are averages derived from all sources available at the time of publication.

chapter

CENTRAL NASSAU • NASSAU NORTH SHORE •
NASSAU SOUTH SHORE



NASSAU SOUTH SHORE

Leadership 2019

The Nassau South Shore Chapter was formed in 1959. Members deal primarily in residential property, followed by commercial and industrial. Described objective: "to promote better real estate practices on the south shore; to conduct educational programs and social programs for south shore REALTORS®." Members have participated in Chamber of Commerce activity and in service clubs and local civic groups.

members

central nassau	3,705
nassau north shore	3,316
nassau south shore	2,821

average number of
annual chapter meetings 5
breakfast 3, evening 2

average meeting
attendants 70

average number of attendees at annual
nassau divisional meeting event. 100



LISA DETURRIS
CHAPTER PRESIDENT
Douglas Elliman Real Estate
2300 Merrick Road
Merrick, NY 11566
(516) 623-4500 • ldeturris@elliman.com



GLORIA RABSON
PRESIDENT ELECT
Douglas Elliman Real Estate
2300 Merrick Road
Merrick, NY 11566
(516) 623-4500 • GloriaRabson@gmail.com



RICHARD WALSH
PRESIDENT ELECT
Keller Willaims Realty Greater
400 Garden City Plaza, Suite 438
Garden City, NY 11530
(516) 873-7100 • rwalsh@kw.com



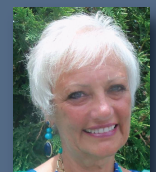
MICHAEL GALICIA
TREASURER
Century 21 American Homes
2911 Long Beach Road
Oceanside, NY 11572
(516) 223-2525 • mgalicia@c21amhomes.com



LYDIA GREEN
SECRETARY
RE/MAX Central Properties
341 Newbridge Road
East Meadow, NY 11554
(516) 731-2700 • lgreen@remax.net



JOE SINNONA
NASSAU VICE PRESIDENT



DIANNE SCALZA
2019 LIBOR PRESIDENT

geographically speaking...

NASSAU SOUTH SHORE CHAPTER

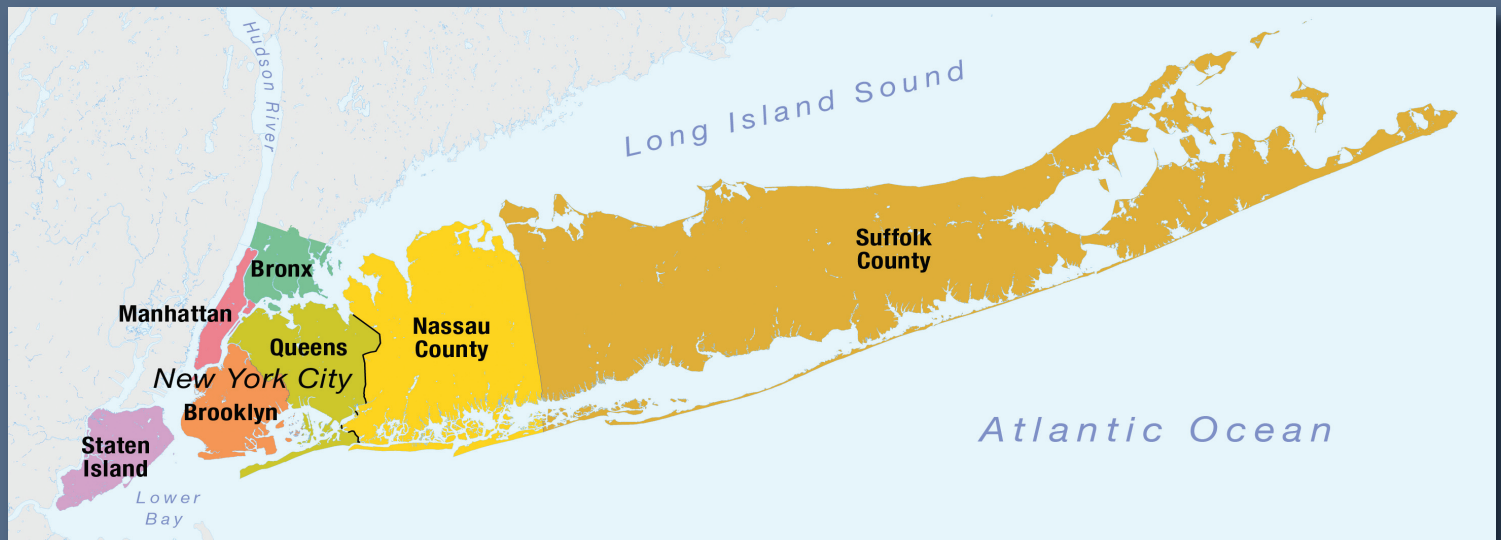
The Nassau South Shore Chapter of the Long Island Board of Realtors[®], Inc. (LIBOR) covers the area of Nassau County between East Rockaway and Massapequa. LIBOR members working in Long Beach, Bellmore, Freeport, Hewlett, Lawrence, Lynbrook, Merrick, Roosevelt, Rockville Centre, Wantagh, Valley Stream, and towns in between, are members of the Nassau South Shore Chapter.

CENTRAL NASSAU CHAPTER

The Central Nassau Chapter of the Long Island Board of Realtors[®], Inc. (LIBOR) covers the area of Nassau County that covers the area of Floral Park to Plainview. LIBOR members working in Albertson, Bethpage, Garden City, East Meadow, Mineola, Hempstead, Hicksville, Uniondale, Westbury, West Hempstead, and other towns in between, are members of the Central Nassau Chapter.

NASSAU NORTH SHORE CHAPTER

The Nassau North Shore Chapter of the Long Island Board of Realtors[®], Inc. (LIBOR) covers the area of Nassau County between Great Neck and Woodbury. LIBOR members working in Bayville, Glen Cove, Manhasset, New Hyde Park, Sea Cliff, Port Washington, Jericho, Syosset, and several towns in between, are members of the Nassau North Shore Chapter.



REAL ESTATE MARKET DATA

2018 Long Island Median Home Price*	\$455,000
Nassau County Closed Median Home Price	\$520,000
Suffolk County Closed Median Home Price	\$375,000
Queens County Closed Median Home Price	\$570,000
LI Contracted (Pending) Median Home Price	\$460,000
LI 2018 Closed Sales Activity	38,799
LI 2018 Contracted Sales Activity	40,319

*Long Island includes data from Nassau, Suffolk and Queens counties.

ABOUT LIBOR

Since 1910 the Long Island Board of Realtors[®] Inc., (LIBOR) has been the voice of Long Island Real Estate. We represent over 25,000 Realtor members and over 290 Affiliated business members.

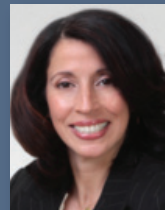
For more information on how to get involved contact Mike Miller, Business Development Manager, 631-661-4800 x384 or mmiller@lirealtor.com.

NASSAUSOUTHSHORE.LIREALTOR.COM

NORTHEAST QUEENS

Leadership 2019

The NorthEast Queens Chapter was the first chapter organized within the Long Island Board of REALTORS® in 1945. Members deal primarily in residential property, followed by commercial.



DIANA ALFARO
CHAPTER PRESIDENT
Douglas Elliman Real Estate
3629 Bell Boulevard
Bayside, NY 11361
(718) 631-8900
Diana.Alfaro@elliman.com



ROSS KEIT
PRESIDENT ELECT
Keller Williams Realty Landmark
3255 Francis Lewis Boulevard
Flushing, NY 11358
(718) 475-2700
ross.keit@kw.com



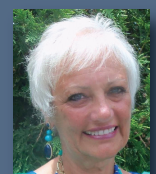
SALVATORE SICA
TREASURER
Keller Williams Realty Landmark
3255 Francis Lewis Boulevard
Flushing, NY 11358
(718) 475-2700
sellwithsal@yahoo.com



DONNA RUBERTONE
SECRETARY
Daniel Gale Associates Inc.
364 Plandome Road
Manhasset, NY 11030
(516) 627-4440
donnaRubertone@danielgale.com



DEOW GANGARAM
QUEENS VICE PRESIDENT*



DIANNE SCALZA
2019 LIBOR PRESIDENT

members

northeast queens 3,757
south queens 1,628
western queens 2,529

average number of

annual chapter meetings 4
breakfast 3, lunch 1

average meeting

attendants 100

average number of attendees

at annual queens divisional
meeting event 100

geographically speaking...

NORTHEAST QUEENS CHAPTER

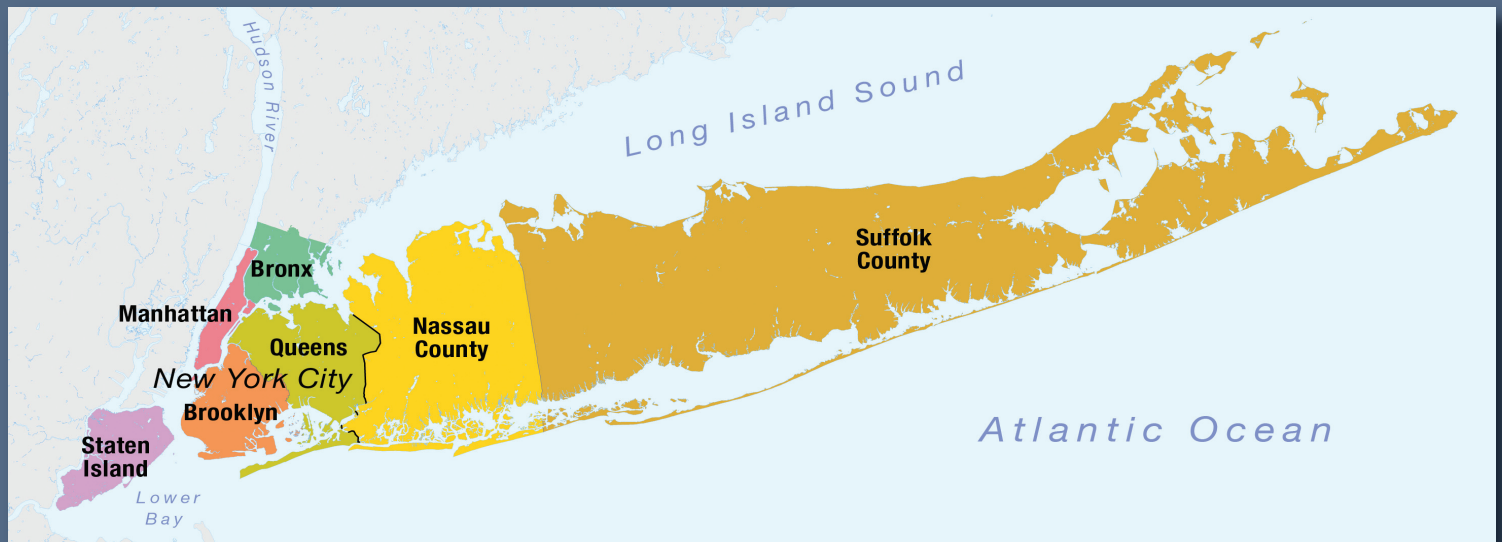
The Northeast Chapter of the Long Island Board of Realtors®, Inc. (LIBOR) stretches from Little Neck to Whitestone. LIBOR members working in Bayside, Bellerose, College Point, Floral Park, Flushing, Fresh Meadows, and Glen Oaks, are members of the Northeast Queens Chapter.

WESTERN QUEENS CHAPTER

The Western Queens Chapter of the Long Island Board of Realtors®, Inc. (LIBOR) covers the area of Queens between Sunnyside and Astoria. LIBOR members working in Corona, Elmhurst, Forest Hills, Glendale, Jackson Heights, Middle Village, Long Island City, Maspeth, Rego Park, Ridgewood and Woodside, are members of the Western Queens Chapter.

SOUTH QUEENS CHAPTER

The South Queens Chapter of the Long Island Board of Realtors®, Inc. (LIBOR) covers the area of Queens the Rockaway's and Ozone Park. LIBOR members working in Howard Beach, Jamaica, Richmond Hill, Woodhaven, Kew Gardens, Hollis, Cambria Heights, Saint Albans, and Queens Village, are members of the South Queens Chapter.



REAL ESTATE MARKET DATA

2018 Long Island Median Home Price*	\$455,000
Nassau County Closed Median Home Price	\$520,000
Suffolk County Closed Median Home Price	\$375,000
Queens County Closed Median Home Price	\$570,000
LI Contracted (Pending) Median Home Price	\$460,000
LI 2018 Closed Sales Activity	38,799
LI 2018 Contracted Sales Activity	40,319

*Long Island includes data from Nassau, Suffolk and Queens counties.

ABOUT LIBOR

Since 1910 the Long Island Board of Realtors® Inc., (LIBOR) has been the voice of Long Island Real Estate. We represent over 25,000 Realtor members and over 290 Affiliated business members.

For more information on how to get involved contact Mike Miller, Business Development Manager, 631-661-4800 x384 or mmiller@lirealtor.com.

NORTHEASTQUEENS.LIREALTOR.COM

chapter

NORTHEAST QUEENS • SOUTH QUEENS • WESTERN QUEENS



SOUTH QUEENS

Leadership 2019

The South Queens Chapter was formed in September 1976 through a merger of the Jamaica Real Estate Board and the Central Queens Chapter. Our basic objective is "to promote and maintain a high standard of ethics in all real estate dealings, and thus serve the public better; to provide members with current information on market trends, legislation, FHA and VA operations, and all other matters affecting the real estate industry."

members

northeast queens 3,757
south queens 1,628
western queens 2,529

average number of

annual chapter meetings 5
 breakfast 4, evening 1

average meeting

attendants 55

average number of attendees

at annual queens divisional meeting event 100



RUTH DEMETRIOU
 CHAPTER PRESIDENT
 Best Team Realty
 8715 164th Street
 Jamaica, NY 11432
 (718) 526-0749
 ruthsellshomes@gmail.com



SHARON KOLLORE (CBR)
 PRESIDENT ELECT
 Sharon Kollore, REALTOR
 11445 175th Street
 Jamaica, NY 11434
 (718) 291-5133
 askreferral2@verizon.net



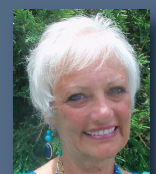
JUAN LOPEZ
 TREASURER
 Stricly Realty
 9520 63rd Road
 Rego Park, NY 11374
 (718) 459-2920
 juanlopezrealestate@hotmail.com



ERICA TURNER
 SECRETARY
 Exit Realty Central
 13307 Crossbay Boulevard
 Ozone Park, NY 11417
 (718) 848-5900
 erica@exitrealtycentral.com



DEOW GANGARAM
 QUEENS VICE PRESIDENT*



DIANNE SCALZA
 2019 LIBOR PRESIDENT

*Corrected

geographically speaking...

SOUTH QUEENS CHAPTER

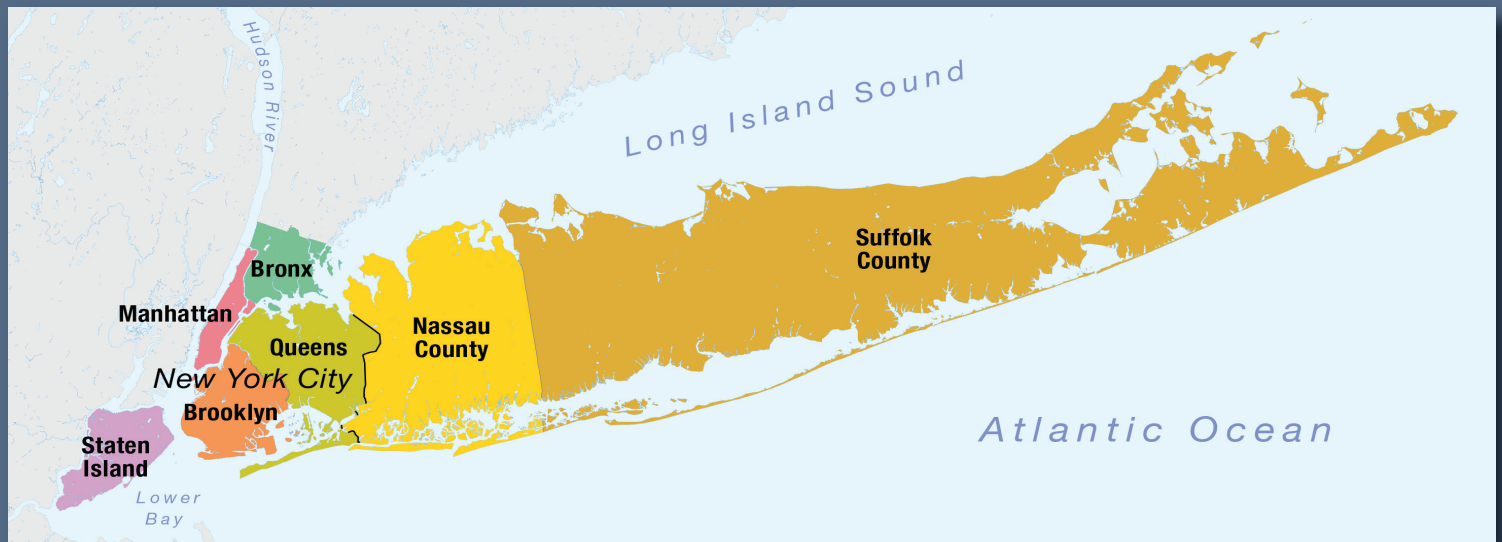
The South Queens Chapter of the Long Island Board of Realtors®, Inc. (LIBOR) covers the area of Queens the Rockaway's and Ozone Park. LIBOR members working in Howard Beach, Jamaica, Richmond Hill, Woodhaven, Kew Gardens, Hollis, Cambria Heights, Saint Albans, and Queens Village, are members of the South Queens Chapter.

NORTHEAST QUEENS CHAPTER

The Northeast Chapter of the Long Island Board of Realtors®, Inc. (LIBOR) stretches from Little Neck to Whitestone. LIBOR members working in Bayside, Bellerose, College Point, Floral Park, Flushing, Fresh Meadows, and Glen Oaks, are members of the Northeast Queens Chapter.

WESTERN QUEENS CHAPTER

The Western Queens Chapter of the Long Island Board of Realtors®, Inc. (LIBOR) covers the area of Queens between Sunnyside and Astoria. LIBOR members working in Corona, Elmhurst, Forest Hills, Glendale, Jackson Heights, Middle Village, Long Island City, Maspeth, Rego Park, Ridgewood and Woodside, are members of the Western Queens Chapter.



REAL ESTATE MARKET DATA

2018 Long Island Median Home Price*	\$455,000
Nassau County Closed Median Home Price	\$520,000
Suffolk County Closed Median Home Price	\$375,000
Queens County Closed Median Home Price	\$570,000
LI Contracted (Pending) Median Home Price	\$460,000
LI 2018 Closed Sales Activity	38,799
LI 2018 Contracted Sales Activity	40,319

*Long Island includes data from Nassau, Suffolk and Queens counties.

ABOUT LIBOR

Since 1910 the Long Island Board of Realtors® Inc., (LIBOR) has been the voice of Long Island Real Estate. We represent over 25,000 Realtor members and over 290 Affiliated business members.

For more information on how to get involved contact Mike Miller, Business Development Manager, 631-661-4800 x384 or mmiller@lirealtor.com.

SOUTHQUEENS.LIREALTOR.COM

WESTERN QUEENS

Leadership 2019

The Western Queens Chapter of the Long Island Board of REALTORS® (LIBOR) was founded in May, 1968 through a merger of the Long Island City and Queens Second Ward Chapters, both of which were among the Board's earliest; most deal primarily with residential and commercial Real Estate. Our objective: "to unite the real estate men and women in the Western Queens area into a working group, so that they may improve their knowledge and understanding of the local market. This united action will enable our members to understand better the public we serve and the community in which we live."

members

northeast queens 3,757
south queens 1,628
western queens 2,529

**average number of
annual chapter meetings** 4

**average meeting
attendants** 50

**average number of attendees
at annual queens divisional
meeting event** 100



KENNETH DUNN
CHAPTER PRESIDENT
Keller Williams Landmark II
7535 31st Avenue, Suite 202
Jackson Heights, NY 11372
(347) 846-1200 • Ken@KennyDunn.com



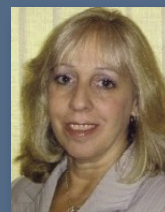
CESAR GARCIA
PRESIDENT ELECT
Keller Williams Landmark II
7535 31st Avenue, Suite 202
Jackson Heights, NY 11372
(347) 846-1200 • info@drqkw.com



KELLY LAGOUDIS
VICE PRESIDENT
Realty Executives Today
3256 Steinway Street
Astoria, NY 11103
(718) 274-2400
kellylagoudis@RealtyExecutives.com



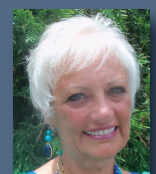
CHRISTOS TSOURATAKIS
TREASURER
Laffey Real Estate
7308 Northern Boulevard
Jackson Heights, NY 11372
(718) 779-2121 • ctsouratakis@laffeyre.com



JACQUELINE ABRAMAITIS
SECRETARY
O'Kane Realty
7201 Grand Avenue
Maspeth, NY 11378
(718) 779-1111 • cooperny@aol.com



DEOW GANGARAM
QUEENS VICE PRESIDENT*



DIANNE SCALZA
2019 LIBOR PRESIDENT

geographically speaking...

WESTERN QUEENS CHAPTER

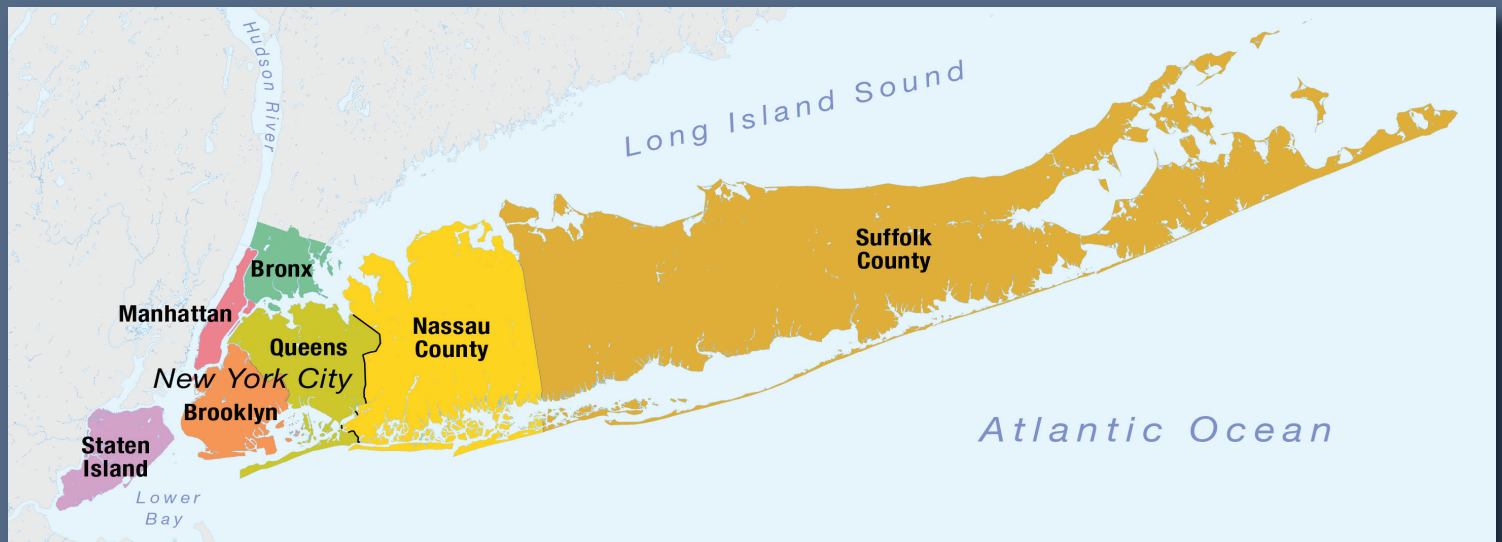
The Western Queens Chapter of the Long Island Board of Realtors® , Inc. (LIBOR) covers the area of Queens between Sunnyside and Astoria. LIBOR members working in Corona, Elmhurst, Forest Hills, Glendale, Jackson Heights, Middle Village, Long Island City, Maspeth, Rego Park, Ridgewood and Woodside, are members of the Western Queens Chapter.

NORTHEAST QUEENS CHAPTER

The Northeast Chapter of the Long Island Board of Realtors® , Inc. (LIBOR) stretches from Little Neck to Whitestone. LIBOR members working in Bayside, Bellerose, College Point, Floral Park, Flushing, Fresh Meadows, and Glen Oaks, are members of the Northeast Queens Chapter.

SOUTH QUEENS CHAPTER

The South Queens Chapter of the Long Island Board of Realtors® , Inc. (LIBOR) covers the area of Queens the Rockaway's and Ozone Park. LIBOR members working in Howard Beach, Jamaica, Richmond Hill, Woodhaven, Kew Gardens, Hollis, Cambria Heights, Saint Albans, and Queens Village, are members of the South Queens Chapter.



REAL ESTATE MARKET DATA

2018 Long Island Median Home Price*	\$455,000
Nassau County Closed Median Home Price	\$520,000
Suffolk County Closed Median Home Price	\$375,000
Queens County Closed Median Home Price	\$570,000
LI Contracted (Pending) Median Home Price	\$460,000
LI 2018 Closed Sales Activity	38,799
LI 2018 Contracted Sales Activity	40,319

*Long Island includes data from Nassau, Suffolk and Queens counties.

ABOUT LIBOR

Since 1910 the Long Island Board of Realtors® Inc., (LIBOR) has been the voice of Long Island Real Estate. We represent over 25,000 Realtor members and over 290 Affiliated business members.

For more information on how to get involved contact Mike Miller, Business Development Manager, 631-661-4800 x384 or mmiller@lirealtor.com.

WESTERNQUEENS.LIREALTOR.COM

division

COMMERCIAL NETWORK

Leadership 2019

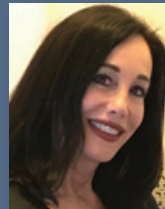
The Commercial Network of the Long Island Board of Realtors® (CNLIBOR) is the Commercial Division of the Long Island Board of Realtors® (LIBOR). CNLIBOR consists of members who do business, in whole or in part, in investment and commercial property. The Commercial Network of the Long Island Board of Realtors® meets monthly to do business and our unique meeting format is strictly a marketing and networking session. Our networking group averages 60 attendees at these monthly breakfast meetings and we are still rapidly growing! Objectives of the CNLIBOR: To unite those Realtors® who have an interest in investment and commercial property for the purpose of enhancing the commercial real estate profession. To provide meetings in which members will have the opportunity to exchange views, information and general knowledge regarding commercial real estate whereby their interests may be advanced.

**average number of
annual division meetings** 14
breakfast 11, lunch 1, evening 2

**average number of attendees
at annual commercial network
meeting event.** 40



PETER ZAVATSKY
DIVISION PRESIDENT
Coldwell Banker Commercial NRT
1 Huntington Quadrangle
Melville, NY 11747
(877) 221-4110
peter.zavatsky@cbmoves.com



MARIAN CAMPI-CONDE
PRESIDENT ELECT
Coldwell Banker Commercial NRT
1 Huntington Quadrangle
Melville, NY 11747
(877) 221-4110
Marian.Campi-Conde@cbmoves.com



WILLIAM MOSELEY
TREASURER
Charles Rutenberg Realty Inc.
255 Executive Drive, Suite 208
Plainview, NY 11803
(516) 575-7500
banohoy@msn.com



KEITH WILSON
SECRETARY
Exit Realty Gateway
1916A Wantagh Avenue
Wantagh, NY 11793
(516) 900-1313
kwilson@optonline.net

division

WOMEN'S COUNCIL

Leadership 2019

Here at the Women's Council, we strive to provide timely, accessible programming, great networking and opportunities for your personal and professional growth.

**average number of
annual division meetings 6**
breakfast 3, evening 3

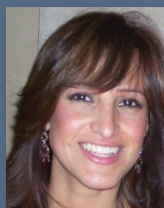
**average number of attendees
at annual women's council
meeting event. 40**



PATRICIA HEGARTY
DIVISION PRESIDENT
Hegarty Group
35 Greene Avenue
Amityville, NY 11701
(516) 380-7041
thehegartygroup@gmail.com



CHRISTINE NAPPA
PRESIDENT ELECT
Nappa Realty Inc.
4647 Merrick Road
Massapequa, NY 11758
(516) 268-7300
info@napparealty.com



JANETTE "JD" PULICE
TREASURER
EXP Realty LLC
70 E Sunrise Hwy Ste 500
Valley Stream, NY 11581
(888) 276-0630
jdpulicerealtor@gmail.com



ELIZABETH TUCKER
SECRETARY
Exit Realty Gateway
1916A Wantagh Avenue
Wantagh, NY 11793
(516) 900-1313
elizabeth@exitrealtygateway.com

YOUNG PROFESSIONALS NETWORK

Leadership 2019

The Young Professionals Network (YPN) is an organization that helps young real estate professionals excel in their careers by giving them the tools and encouragement to become successful in their career. The Long Island Board of REALTORS® is proud to join the YPN movement and established a YPN chapter for Long Island that supports members in Queens, Nassau, and Suffolk Counties. Young professionals represent the future of the real estate industry. Members of the YPN represent the next generation of leaders in our association and our community.

average number of annual division meetings 7
lunch 1, evening 6

average number of attendees at annual young professionals meeting event. 50



ELIZABETH LOWE
DIVISION PRESIDENT
Exit Realty Achieve
956 W. Jericho Turnpike, Suite 1
Smithtown, NY 11787
(631) 543-2009
realtorbethlowe@gmail.com



CHRISTOPHER BACCHUS
PRESIDENT ELECT
Douglas Elliman Real Estate
3629 Bell Boulevard
Bayside, NY 11361
(718) 631-8900
christopher.bacchus@alliman.com



EMILY CATIK
TREASURER
Coach Real Estate Associates In.
463 Montauk Highway
West Islip, NY 11795
(631) 587-1700
ecatik@coachrealtors.com



JOSEPH PICCININNI
SECRETARY
Coldwell Banker Beau Hulse Realty
91 Jobs Lane
Southampton, NY 11967
(631) 287-7707
joe@picsproperties.com



LONG ISLAND BOARD OF REALTORS[®], INC.
300 SUNRISE HIGHWAY • WEST BABYLON, NY 11704
(631) 661-4800 • LIREALTOR.COM